

NIAGARA MARINE LTD.
79 GENEVA ST. - MU. 5-4204
ST. CATHARINES, ONT.



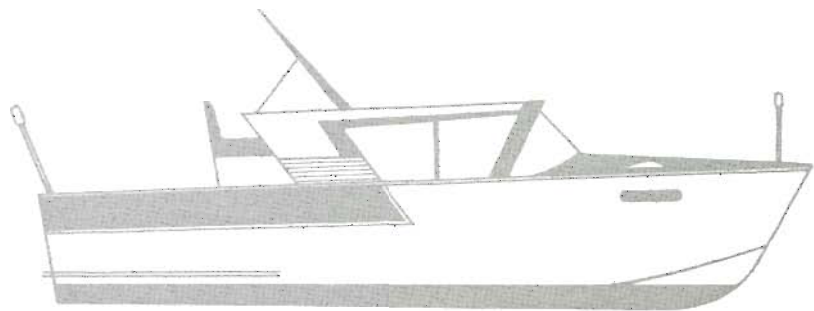
NIAGARA MARINE LTD.
79 GENEVA ST. MU. 5-4204
ST. CATHARINES, ONT.



Kepon



Shepherd



CANADA'S FIRST

Magnificent beyond expectation . . . such has been said about the first production model 45 foot Flying Bridge Cruiser built by Shepherd. Styled by Sundberg-Ferar, America's foremost industrial designers, a most distinctive combination of beauty and practicality has been achieved. A smooth symmetry of forward flowing lines on cabin sides indicate a look of motion and obvious individuality. A quantity of brilliant stainless steel trim has been used to add greatly to the overall impression.

The custom pilot seat gives you easy access to the most advanced, richly finished control panel you have ever seen.

The spaciousness of the main salon complimented by the different interior cabin arrangement will gain your immediate approval. Panelled bleached teakwood finished to a velvet smoothness throughout the main cabin and aft stateroom, with practical use of smart, stylish rattan, coupled with a rich choice of drapery and upholstery fabrics and completed by deep pile carpeting provide an interior luxury yet experienced in boating.

The performance is as delightful as it is to behold.

To command the wheel of the Shepherd 45' is to have at your control the ultimate in craftsmanship, distinction and quality.

**Denotes a quality Shepherd feature found in the construction of each model 16' to 45'.*



Shepherd

45'
FLYING BRIDGE
CRUISER

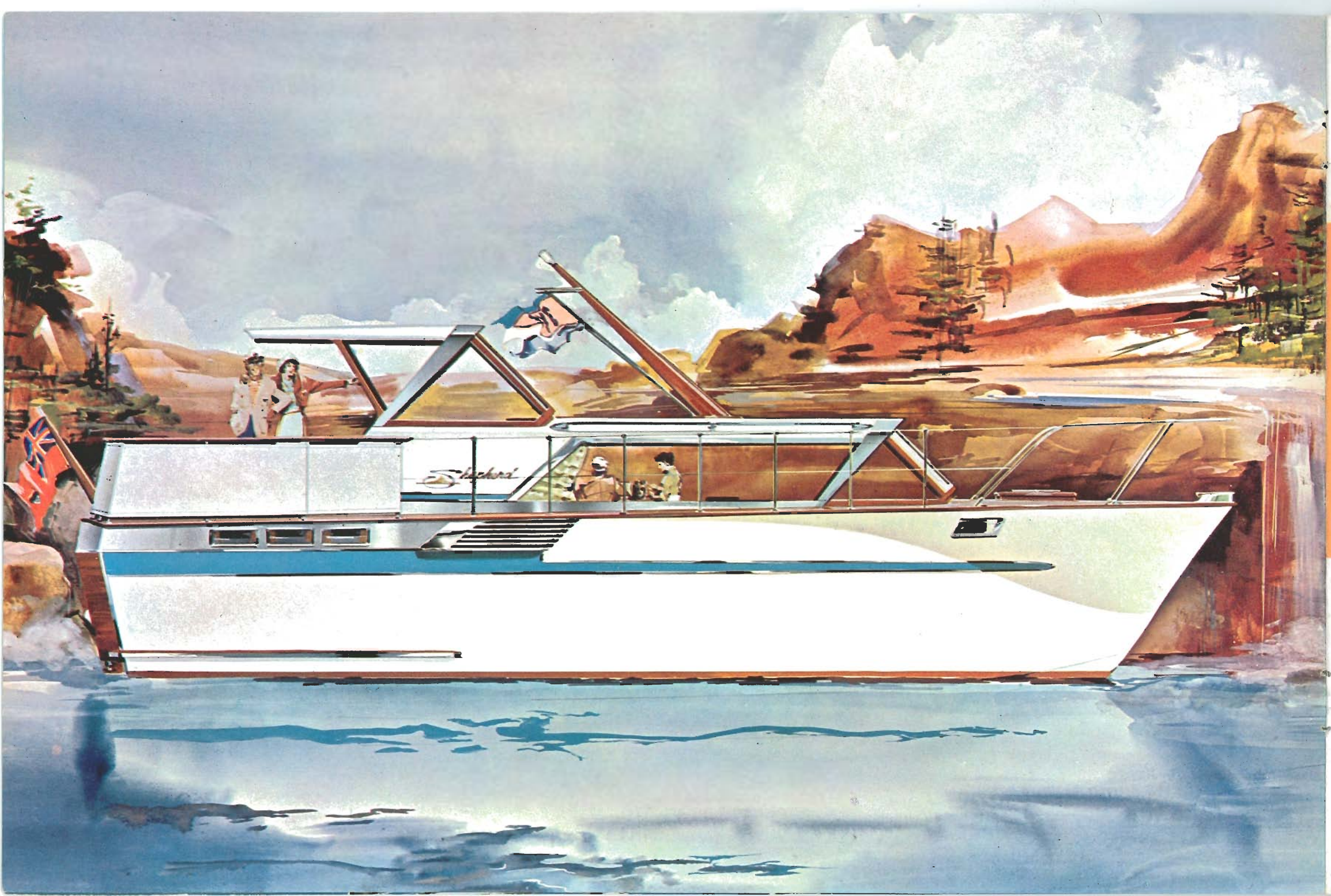


Unmatched Splendor! As rewarding to own as she is to admire, with reverse canted glare-free and weather-free windshields which add to the interior spaciousness. A proud owner you can be, with a main salon 14' x 11'. There are six cabinets lining the entire length of the main cabin on each side which provide desirable storage. At the forward end of the salon there is a beautifully finished teakwood liquor cabinet. The aft stateroom is one of resplendent luxury providing two closets, a large chest of drawers, a complete head with enclosed shower and extra refinements which will justify your pride in ownership.

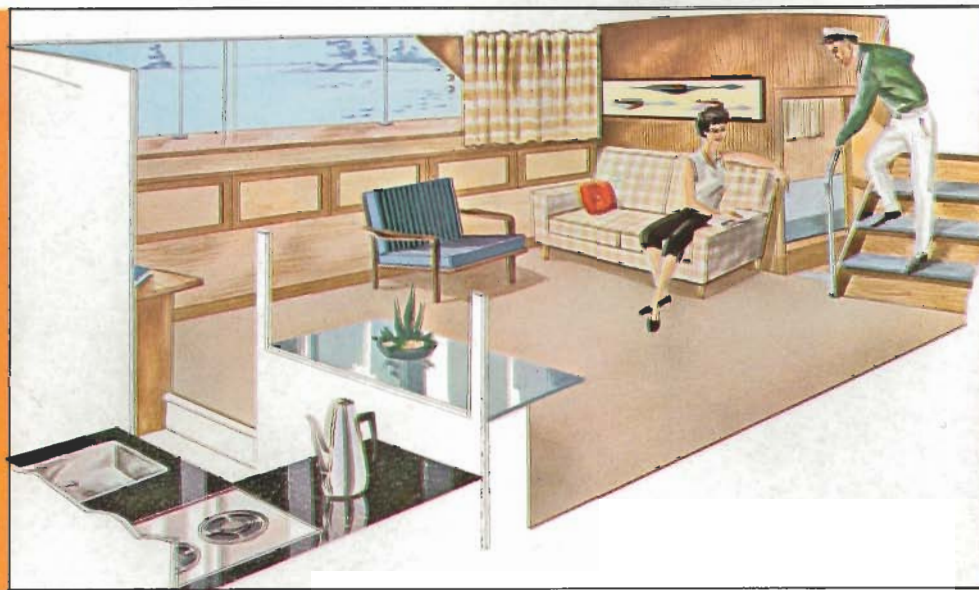
Standard equipment includes such equipment as, all decks of teakwood, pressure water system with hot water system, hardtop, electric head aft, enclosed shower, screens and drapes, shoreplug and 110 V outlets, insulated engine compartment, two auto-bilge pumps, two blowers and many other extras.

Standard power is twin 280 hp. with diesel options.

*Of course, honduras mahogany planking has been used to make a dynamic hull of lasting beauty and durability.



Shepherd



38' FLYING BRIDGE CRUISER

The ideal Cruiser! Cruising comfort and privacy for 6 with an impressive aft stateroom with individual head. The 38' offers a spacious main salon designed for gracious living. You will be amazed to see the attractive combination of roominess and completeness. Richly finished in finest Shepherd fashion yet this yacht represents an excellent value in aft stateroom models. Many desirable extras such as teak decks, pressure water system, automatic bilge pump, helmsman's chair and many others are included as standard equipment. Twin power to 560 hp.

*Naturally, double planked mahogany bottom with lead-bedded canvas between, strengthened by many hundreds of copper rivets holding layers together, and silicon bronze screwed into the frames.



Shepherd



33' FLYING BRIDGE CRUISER

Climb aboard this Shepherd 33 footer for unsurpassed luxury cruising for six. Crisply styled with tasteful application of stainless steel trim makes this a most stately and majestic ship. Beam of 11' 9" and headroom of 6' 6" result in a most spacious main cabin. A bright new interior with colour combinations to captivate your every desire. Equipment such as convertible top, teak decks, safety plate glass throughout, fresh water circulating pump, automatic bilge pump blower, screens and drapes are all included. Speeds to 37 mph. are obtained with twin power to 560 hp.

*Selected white oak frames throughout, of course, to give a strength far in excess of any demands which may be placed upon it.



Shepherd



THE POPULAR "25"

Distinction among the many, because it's a Shepherd 25 footer. New sweeping cabin lines, with flowing two-tone hull pattern coupled with stainless steel trim treatment result in a most graceful and elegant appearance.

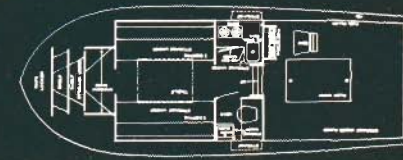
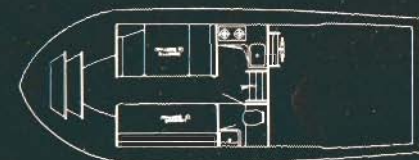
With two cabin arrangements available, four can cruise in comfort with complete galley and head. There is plentiful storage space ahead of the forward bulkhead. This solid performer weighs three tons and will take any rough weather you may encounter. With safety plate glass throughout, teak aft deck, fresh water circulating pump, screens and drapes, stainless steel gas tank, etc., as standard equipment, she is a well equipped craft and you'll be pleasantly surprised when you hear the price.

Twin power up to 380 hp., it gives 38 mph.

Once you see her, you'll want her for your own.

*Double gusseted frames, bolted screwed and glued for extra strength.

NIAGARA MARINE LTD.
79 GENEVA ST. - MU. 5-4204
ST. CATHARINES, ONT.



22' RUNABOUT



Dynamic best describes the new 22' Shepherd. A lower silhouette featuring fluid lines which express an eagerness to fairly "leap into action".

Sumptuously upholstered in a most impeccable manner, she belongs to one who demands the finest. Complete with richly finished liquor cabinet and storage cabinet in seat backs, you will delight in treating your guests unquestionably to the finest in "runabouting".

*Several coats of hand sanded varnish give the unparalleled Shepherd mirror finish.

19' RUNABOUT



19' of unsurpassed Shepherd beauty and thrill with power up to 280 hp. providing speeds in excess of 45 mph.

From the rakish compound curved bow section to the flared transom line the Shepherd 19' represents the surging performance of a truly unique thoroughbred. The soft ride at wide open throttle indicates the Shepherd mastery of hull design. Convenient liquor and storage cabinets with fold-down table tops have been designed into the seat backs. The custom tempered glass windshield is but one further sign of Shepherd quality.

*The white oak bottom frames are on 12" centers and the white oak battens are on 6" centers to reconfirm your feeling of security and safety engineered in a hull to last for years.

16' RUNABOUT



The spritely 16' *Combo* yet is built in the finest style. The hydro in a two-tone combination with a steering wheel you will find sports in mind this five speed is desired.

16' RUNABOUT



The spritely 16' *Combo* comes completely equipped, is priced most attractively yet is built in the finest Shepherd tradition. Lavishly upholstered with naugahyde in a two-tone combination complete with glove compartment and deluxe steering wheel you will take justifiable pride in your possession. With water sports in mind this five seater will provide all the power and manoeuvrability desired.



22' - 19' - 16'
RUNABOUTS

The most resplendent outboard built with appointments found only in the most discriminating inboard runabouts. Built to handle the largest motors she rides high dry and level with speeds to excite the "young at heart". Standardly equipped with fully upholstered cockpit, wraparound custom windshield, deluxe steering wheel and all fittings, the Shepherd 16' Outboard will prove to be as pleasureable to drive as it is to own.

The famous 16' Inboard is available in either direct or V-drive. With up to 170 hp. speeds to 40 mph. are obtained and "sports car" handling are the reward for the owner. An interior cockpit luxuriously appointed with attention to the details features a vinyl carpeting which has the practical touch of being easily cleaned.

	Length	Beam	Moulded Depth	Draft	Freeboard Fore & Aft	Bottom	Sides	Deck	Seats	Controls — Gearshift	Engine	Weight (Approx.)	Speed (Approx.)	Sleeping Accommodation	Frames and Battens	Stem and Keel	Fastenings	Windshield	Instrument Panel	Gasoline Tank	Rudder and Propeller	Str
16' Outboard	16 ft.	6 ft. 4 in.	37"	24"	25½" - 18"	¾" mahog. — double	7/16" honduras mahog.	7/16" honduras mahog.	full back seat, split front; seats 5		top horsepower	800 lbs.	up to 38 m.p.h.		selected white oak	selected white oak & mahog.	silicon bronze screws; brass screws and galv. bolts	plexiglass wraparound aluminum mouldings, top and bottom		optional		
16' Combo	16 ft.	6 ft. 4 in.	37"	24"	25½" - 18"	¾" mahog. — double	7/16" honduras mahog.	7/16" honduras mahog.	full back seat, split front; seats 5	single lever	up to 100 h.p.	1350 lbs.	up to 35 m.p.h.		selected white oak	selected white oak & mahog.	silicon bronze screws; brass screws and galv. bolts	plexiglass wraparound aluminum mouldings, top and bottom	water temp., tach., ammeter, oil, lighted, light switches	16½ Imp. gals. stainless steel		
19' Inboard D. D. or V. D.	19 ft.	6 ft. 9 in.	44½"	25"	26½" - 20½"	7/16" mahog. — double	7/16" honduras mahog.	¾" honduras mahog.	full back seat, split front; seats 5	hydraulic	up to 280 h.p.	2600 lbs.	over 45 m.p.h.		selected white oak	selected white oak & mahog.	silicon bronze screws; brass screws and galv. bolts	tempered glass moulded corners	lighted; tachometer, gas, ammeter, oil, water temp., lighter, choke, light switches, nameplates	21 Imp. gals. stainless steel	manganese bronze	manganese bronze with Ag bearing
22' Inboard D. D. or V. D.	22 ft.	7 ft. 4 in.	52½"	26"	34½" - 24"	7/16" mahog. — double	7/16" honduras mahog.	¾" honduras mahog.	full back seat, split front; seats 5	hydraulic	up to 280 h.p.	3000 lbs.	up to 44 m.p.h.		selected white oak	selected white oak & mahog.	silicon bronze screws; brass screws and galv. bolts	tempered glass moulded corners	lighted; tachometer, gas, ammeter, oil, water temp., lighter, choke, light switches, nameplates	30 Imp. gals. stainless steel	manganese bronze	manganese bronze with Ag bearing
25' F. B. Cruiser D. D.	25 ft.	9 ft. 4 in.	66"	27"	45½" - 37"	½" mahog. — double	¾" honduras mahog.	7/16" mahog. decking over ¼" plywood forward	1 helmsman's seat convertible dinette settee	hydraulic	twin engines up to 380 h.p.	5900 lbs.	single 30 twin 38	4	selected white oak	selected white oak & mahog.	silicon bronze screws; brass screws and galv. bolts	safety plate glass throughout ventilating F.B. windshield	lighted; tachometer, fuel, ammeter, oil, water temp., lighter, appropriate light and accessory switches, nameplates	single 45 Imp. gals. twin 2 - 30 Imp. gals. stainless steel	manganese bronze	manganese bronze with Ag bearing
33' F. B. Cruiser D. D.	33 ft.	11 ft. 9 in.	81¼"	30"	60" - 45"	½" mahog. — double	¾" honduras mahog.	½" teak decking over ½" plywood forward	1 helmsman's seat convertible dinette settee	hydraulic	twin engines up to 560 h.p.	8900 lbs.	up to 37 m.p.h.	6	selected white oak	selected white oak & mahog.	silicon bronze screws; brass screws and galv. bolts	safety plate glass throughout ventilating F.B. windshield	lighted; tachometer, fuel, ammeter, oil, water temp., lighter, appropriate light and accessory switches, nameplates	2 - 45 Imp. gals. stainless steel	manganese bronze	manganese bronze with Ag bearing
38' F. B. Cruiser (Aft Stateroom)	38 ft.	12 ft. 9 in.	91"	33"	66" - 53½"	¾" mahog. — double	¾" honduras mahog.	½" teak over ¾" plywood	1 helmsman's seat 1 foldaway	hydraulic	twin engines up to 560 h.p. diesel option	19,000 lbs.	up to 28 m.p.h.	6	selected white oak	selected white oak & mahog.	silicon bronze screws; brass screws and galv. bolts	safety plate glass throughout ventilating F.B. windshield	lighted; tachometer, ammeter, oil, water temp., lighter, appropriate light and accessory switches, nameplates	2 - 100 Imp. gals. hot dipped galv.	manganese bronze	manganese bronze with Ag bearing
45' D.C.F.B. Cruiser (Flush Deck)	45 ft.	14 ft.	102"	36"	72" - 64"	¾" mahog. — double	¾" honduras mahog.	½" teak over ¾" plywood	1 helmsman's seat 1 foldaway	hydraulic	twin engines up to 560 h.p. diesel option	26,000 lbs.	up to 25 m.p.h.	6 - 8	selected white oak	selected white oak & mahog.	silicon bronze screws; brass screws and galv. bolts	safety plate glass throughout ventilating F.B. windshield	lighted; tachometer, ammeter, oil, water temp., lighter, appropriate light and accessory switches, nameplates	2 - 150 Imp. gals. hot dipped galv.	manganese bronze	manganese bronze with Ag bearing

16' O.B. — lifting rings, fore and aft; uncleats; cleats; sheer mouldings; running lights; chocks; sheaves; L.H. glove compartment; garboard drain; self draining well; hatch on aft deck.

16' Combo — lifting ring for'd; uncleats; cleats; sheer mouldings; running lights; chocks; sheaves; L.H. glove compartment; garboard drain; full instrumentation.

16' Inboard, D.D. and V.D.—same as Combo.

19' Inboard, D.D. and V.D.—lifting rings, fore and aft; uncleats; cleats; sheer mouldings; running lights; chocks; 2 pr. step-plates; electric horn; two chrome transom vents; garboard drain; vent windows; 2 mahog. liquor cabinets with fold-down table tops; cutwater, padded dashboard; tempered glass wraparound windshield.

22' Inboard, D.D. and V.D.—lifting rings, fore and aft; cleats; sheer mouldings; running lights; uncleats; 2 pr. step-plates; electric horn; chocks; cutwater; two chrome transom vents; Garboard drain; vent windows; tempered glass wraparound windshield; 2 mahog. liquor cabinets with fold down table tops.

25' F. B. Cruiser — electric bilge pump; electric horn; hinged engine hatch; running lights (international); 6 instrument panel; galley complete alcohol stove and st. st. sink; ice box; fresh water circulating pump; Garboard drain; enclosed head with sink, mirror and cupboard; helmsman's seat; cabin hand rails; teak rear deck;

screens and drapes; convertible dinette window in cabin door; gates in both railings; adjustable vent window in F.B. windshield; safety plate glass throughout; bow lifting ring and stern lifting sockets; mahog. mast; mahog. stern flagpole; gate valves on engine(s) and head fully bonded against electrolysis.

33' F. B. Cruiser — automatic bilge pump; fresh water circulating pump; bilge blower; marmac motor controls; cleats; chocks; step plates; cabin hand rails; sheer mouldings; international lights; twin electric trumpet horns; stern and bow springline bits; motor compartment insulated; cabin lights; sliding windows; mahog. mast; mahog.

flagpole bow and stern; Garboard drain; convertible dinette; screens and drapes; gate valves on engines and head; teak decks, fore and aft and sides; convertible top; deluxe helmsman's chair; dish rack; bow lifting ring and stern lifting sockets; safety plate glass throughout fully bonded against electrolysis hinged engine hatches.

38' F. B. Cruiser — marmac motor controls; cleats; chocks; cabin hand rails; bow pulpit and side stanchions; sheer mouldings; international lights; twin electric trumpet horns; stern and bow springline bits; motor compartment insulated; all cabin and engine compartment lights; safety plate glass throughout; mahog. mast; and yard arm; mahog. flagpole (stern); Garboard drain; screens and drapes; gate valves on engines and heads; 2

head side helm bilge wat elect lachd mirt bed ma way firm win

Gasoline Tank	Rudder and Propeller	Strut	Shaft	Shaft Leg	Steering	Steering Wheel	Headroom	Floor Covering	Throttle Control	Upholstery	Seat Cushions	Hardware	Flagpole	Water Tank	Finish
optional					Cable	DeLuxe with horn ring		rubber		Vinyl-jersey backed	Resilitex	chrome plated brass and aluminum	chrome lighted		deck, topsides, transom, inside lining varnished and painted; bottom inside oil treated and painted; bottom outside painted with anti-fouling copper bronze
16 1/2 Imp. gals. stainless steel					rack and pinion	DeLuxe with horn ring		vinyl carpeting	single lever	Vinyl-jersey backed	Resilitex	stainless steel, chrome plated brass and aluminum	mahog. lighted		deck, topsides, transom, inside lining varnished and painted; bottom inside oil treated and painted; bottom outside painted with anti-fouling copper bronze
21 Imp. gals. stainless steel	manganese bronze	manganese bronze with Aqualite bearing	Tobin bronze	bronze with Syntron Seal	R. H. drag link	DeLuxe with horn ring		vinyl carpeting	on steering column	Vinyl-jersey backed	foam	stainless steel, chrome plated brass and aluminum	mahog. lighted		deck, topsides, transom, inside lining varnished and painted; bottom inside oil treated and painted; bottom outside painted with anti-fouling copper bronze
30 Imp. gals. stainless steel	manganese bronze	manganese bronze with Aqualite bearing	Tobin bronze	bronze with Syntron Seal	R. H. drag link	DeLuxe with horn ring		vinyl carpeting	on steering column	Vinyl-jersey backed	foam	stainless steel chrome plated brass and aluminum	mahog. lighted		deck, topsides, transom, inside lining varnished and painted; bottom inside oil treated and painted; bottom outside painted with anti-fouling copper bronze
single 45 Imp. gals. twin 2 - 30 Imp. gals. stainless steel	manganese bronze	manganese bronze with Aqualite bearing	Tobin bronze	bronze with Syntron Seal	rack and pinion with cable	Ship's wheel	6' 2"	vinyl carpeting	on instrument panel	settees — drapes, etc., fabric cloth	settees — foam	stainless steel chrome plated brass and aluminum	mahogany	galv. 18 gal.	deck, topsides, transom, inside lining varnished and painted; bottom inside oil treated and painted; bottom outside painted with anti-fouling copper bronze
2 - 45 Imp. gals. stainless steel	manganese bronze	manganese bronze with Aqualite bearing	Tobin bronze	bronze with Syntron Seal	rack and pinion with cable	Ship's wheel	6' 6"	vinyl carpeting	on instrument panel	settees — drapes, etc., fabric cloth	settees — foam	stainless steel chrome plated brass and aluminum	mahogany	galv. 33 gal.	deck, topsides, transom, inside lining varnished and painted; bottom inside oil treated and painted; bottom outside painted with anti-fouling copper bronze
2 - 100 Imp. gals. hot dipped galv.	manganese bronze	manganese bronze with Aqualite bearing	Tobin bronze	bronze with Syntron Seal	rack and pinion with cable	Ship's wheel	6' 5"	broadloom	on instrument panel	settees — drapes, etc., fabric cloth	settees — foam	stainless steel chrome plated brass and aluminum	mahogany	hot dipped galv. 75 gal.	deck, topsides, transom, inside lining varnished and painted; bottom inside oil treated and painted; bottom outside painted with anti-fouling copper bronze
2 - 150 Imp. gals. hot dipped galv.	manganese bronze	manganese bronze with Aqualite bearing	Tobin bronze	bronze with Syntron Seal	rack and pinion with cable	Ship's wheel	6' 5"	broadloom	on instrument panel	settees — drapes, etc., fabric cloth	settees — foam	stainless steel chrome plated brass and aluminum	mahogany	hot dipped galv. 125 gal.	deck, topsides, transom, inside lining varnished and painted; bottom inside oil treated and painted; bottom outside painted with anti-fouling copper bronze

38' F.B. Cruiser — marmac motor controls; cleats; chocks; cabin hand rails; bow pulpit and side stanchions; sheer mouldings; international lights; twin electric trumpet horns; stern and bow springline bits; motor compartment insulated; all cabin and engine compartment lights; safety plate glass throughout; mahog. mast; and yard arm; mahog. flagpole (stern); Garboard drain; screens and drapes; gate valves on engines and heads; 2

heads; teak decks fore'd, aft, and sides; convertible top; deluxe helmsman's chair; 2 automatic bilge pumps; 2 blowers; pressure water system; fully bonded against electrolysis; escape hatch with ladder; icebox; alcohol stove; mirrors, 1 in each head; 1 hide-a-bed in main salon; broadloom in main salon; aft stateroom and stairways; ventilated F.B. windshield; limber chain; hatch with deadlight; window in cabin door.

45' D.C.F.B. Cruiser — marmac motor controls; cleats; chocks; cabin hand rails; bow pulpit and side stanchions; sheer mouldings; international lights; twin electric trumpet horns; stern and bow springline bits; motor compartment insulated; all cabins and engine compartment lights; safety plate glass throughout; mahog. mast; mahog. flagpole; Garboard drain; screens and drapes; gate valves on

engines and heads; teak decks, fore, aft and sides; hard top; deluxe helmsman's chair; 2 automatic bilge pumps; 2 blowers; pressure water system with "Galleymaid" hot water system; 2 heads, aft head electric; enclosed shower with electric sump pump, fully bonded against electrolysis; engine compartment floor — linoleum covered; ladder in escape hatch; icebox; fold down tables for

dinette; 4-110 V outlets (double) and shoreplug; hand bilge pump; vanity chair; liquor cabinet; mirrors, 1 in each head and 1 in vanity; 1 hide-a-bed in main salon; broadloom in main salon; stairways and aft stateroom; ventilated F.B. windshield; limber chain; galley exhaust fan; hatch with deadlight window in cabin door; 2 w/s wipers.

Abbreviations

O.B. — Outboard
D.D. — Direct Drive
V.D. — V-drive
D.C.F.B. — Double Cabin Flying Bridge
H.T. — Hard Top
hp. — Horsepower
R.H. — Right Hand
L.H. — Left Hand
St. St. — Stainless Steel
w/s — Windshield

Specifications subject to change without notice.

SPECIFICATIONS

SHEPHERD BOATS LIMITED NIAGARA - ON - THE - LAKE ONTARIO CANADA

NIAGARA MARINE LTD.
79 GENEVA ST. - MU. 5-4204
ST. CATHARINES, ONT.